



RECP #: 752669

RECORDED 5/8/2019 AT 1:11 PM BK# 2620 PG# 1711
Debra K. Lee, CLERK OF LARAMIE COUNTY, WY PAGE 1 OF 1

STATE OF WYOMING CORNER RECORD

(In compliance with the CORNER PERPETUATION AND FILING ACT; Wyoming Statutes, 1997 Section 33-29-140, et. seq., and the Rules and Regulations of the Board of Registrations for Professional Engineers and Professional Land Surveyors)

NORTHEAST CORNER SECTION 11, T. 18 N., R. 61 W., 6TH P.M., LARAMIE COUNTY, WYOMING

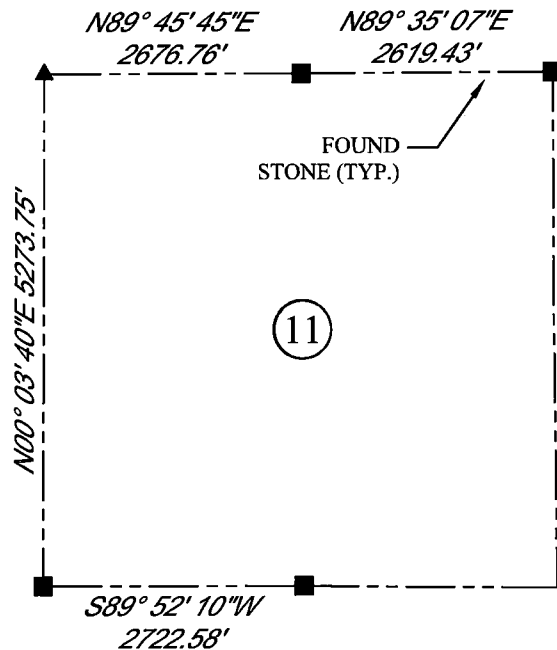
GLO: A FLINT 12X10X4 SET 8 IN DEEP MARKED WITH 5 NOTCHES ON S EDGE AND 1 NOTCH ON E SIDE FOR COR TO SEC 1,2,11,12.

FOUND: FLINTSTONE ON SIDE APPROXIMATELY 6" BELOW GROUND SURFACE. STONE IS AT N/S/W FENCE CORNER. STONE IS APPROXIMATELY 12X9X4 WITH 3 MARKS ON SIDE OF STONE.

SET: NOTHING



SCALE: NONE
NORTH DETERMINED BY
G.P.S OBSERVATIONS



LEGEND:

- FOUND BLM CAP
- FOUND USFS CAP
- FOUND STONE
- FOUND PRIVATE MONUMENT
- ◆ CALCULATED POSITION
- ▲ SET MONUMENT (LS10245)
- SECTION LINE

DATE OF FIELD WORK: 12/7/2018 OFFICE REFERENCE: MERIDEN

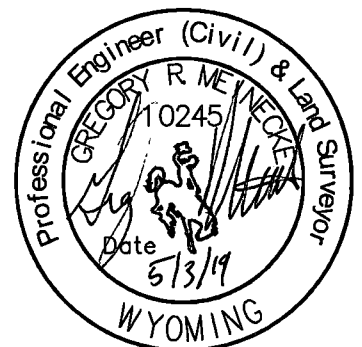
CROSS INDEX DIAGRAM

	1	2	3	4	5	6	7	8	9	10	11	12	13	14	15	16	17	18	19	20	21	22	23	24	25	
A																										
B																										
C			6			5			4			3			2				1							
D																										
E																										
F																										
G			7			8			9			10			11				12							
H																										
J																										
K																										
L			18			17			16			15			14				13							
M																										
N																										
O																										
P			19			20			21			22			23				24							
Q																										
R																										
S																										
T			30			29			28			27			26				25							
U																										
V																										
W																										
X			31			32			33			34			35				36							
Y																										
Z																										
	1	2	3	4	5	6	7	8	9	10	11	12	13	14	15	16	17	18	19	20	21	22	23	24	25	

WOOD
2615 AVIATION DRIVE
SHERIDAN, WY 82801
PH: 307-675-6400

wood.

THIS CORNER RECORD WAS
PREPARED BY ME OR UNDER
MY DIRECTION AND
SUPERVISION,
SEAL AND SIGNATURE



CORNER NAME: NORTHEAST SECTION: 11 T. 18N., R. 61 W., ; 6TH P.M. CROSS-INDEX # E-21
SBRPELS/PLSW: MARCH 1994; PLSW JANUARY 1998